

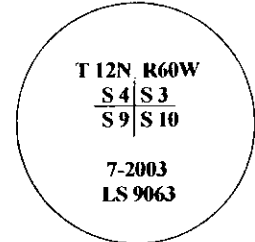
State of Wyoming Corner Record

(In compliance with the CORNER PERPETUATION AND FILING ACT, Wyoming Statutes, 1997, Section 33-29-140, et seq., and the Rules and Regulations of the Board of Registration for Professional Engineers and Professional Land Surveyors)

Reverse side of this form may be used if more space is needed.

Record of original survey and citation of source of historical information (if corner is lost or obliterated). Description of corner monumentation evidence found and/or monument and accessories established to perpetuate the location of this corner. Sketch of relative location of monument, accessories, and reference points with course and distance to adjacent corner(s) (if determined in this survey). Method and rationale for reestablishment of lost or obliterated corner.

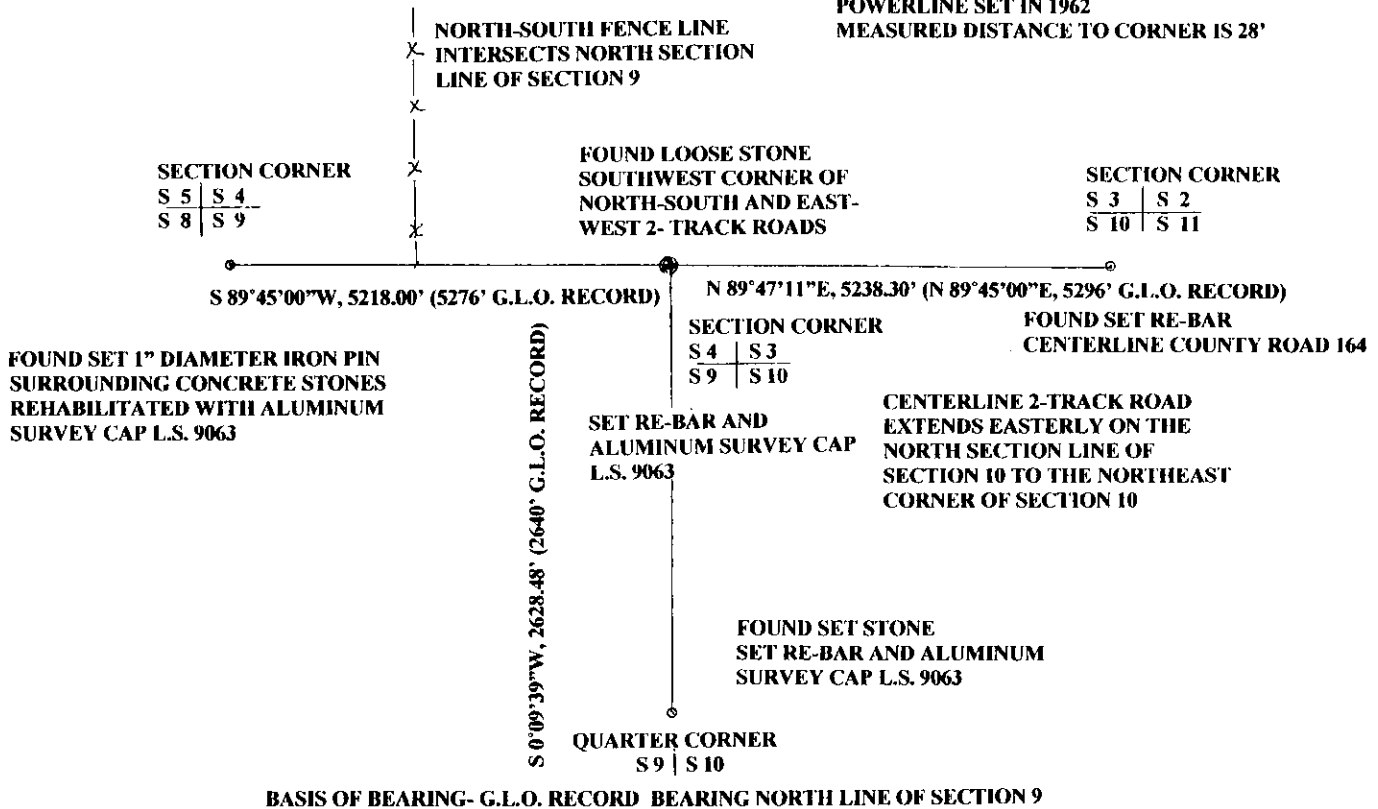
FOUND: Loose stone at the Southwest intersection of North-South and East-West 2-track roads. An additional loose stone found 40 feet west of this location. I assume this to be a 40' offset for Road right-of-way. HyWest Energy records indicate that the section corner is located 30 feet West of the power line at the road intersections set in 1962. The loose stone is situated 28' west of the power line. A north-south fence line intersects the north section line of Section 9 west of the apparent quarter Corner location. The end post is set directly on the straight line between the Northwest and Northeast Corners of Section 9.



SET: An aluminum survey cap, marked L.S. 9063, and marked appropriately for the Section Corner At the position of the found stone.

MONUMENT DESCRIPTION

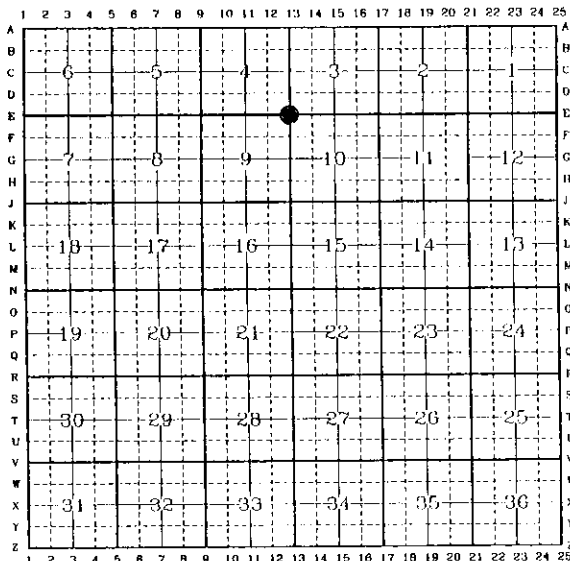
HYWEST ENERGY POWERLINE
LOCATED 30' EAST OF CORNER
LOCATION FROM THEIR RECORDS.
POWERLINE SET IN 1962
MEASURED DISTANCE TO CORNER IS 28'



BASIS OF BEARING- G.L.O. RECORD BEARING NORTH LINE OF SECTION 9

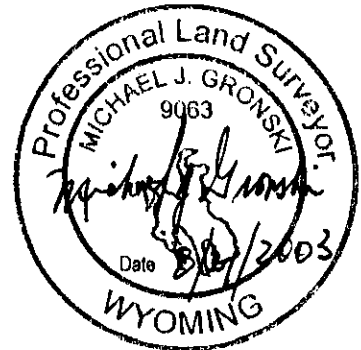
Date of Field Work: 7-2003 Office Reference: Retracement Survey Section 9 (Record of Survey as Exhibit for sale of property)

CROSS INDEX DIAGRAM



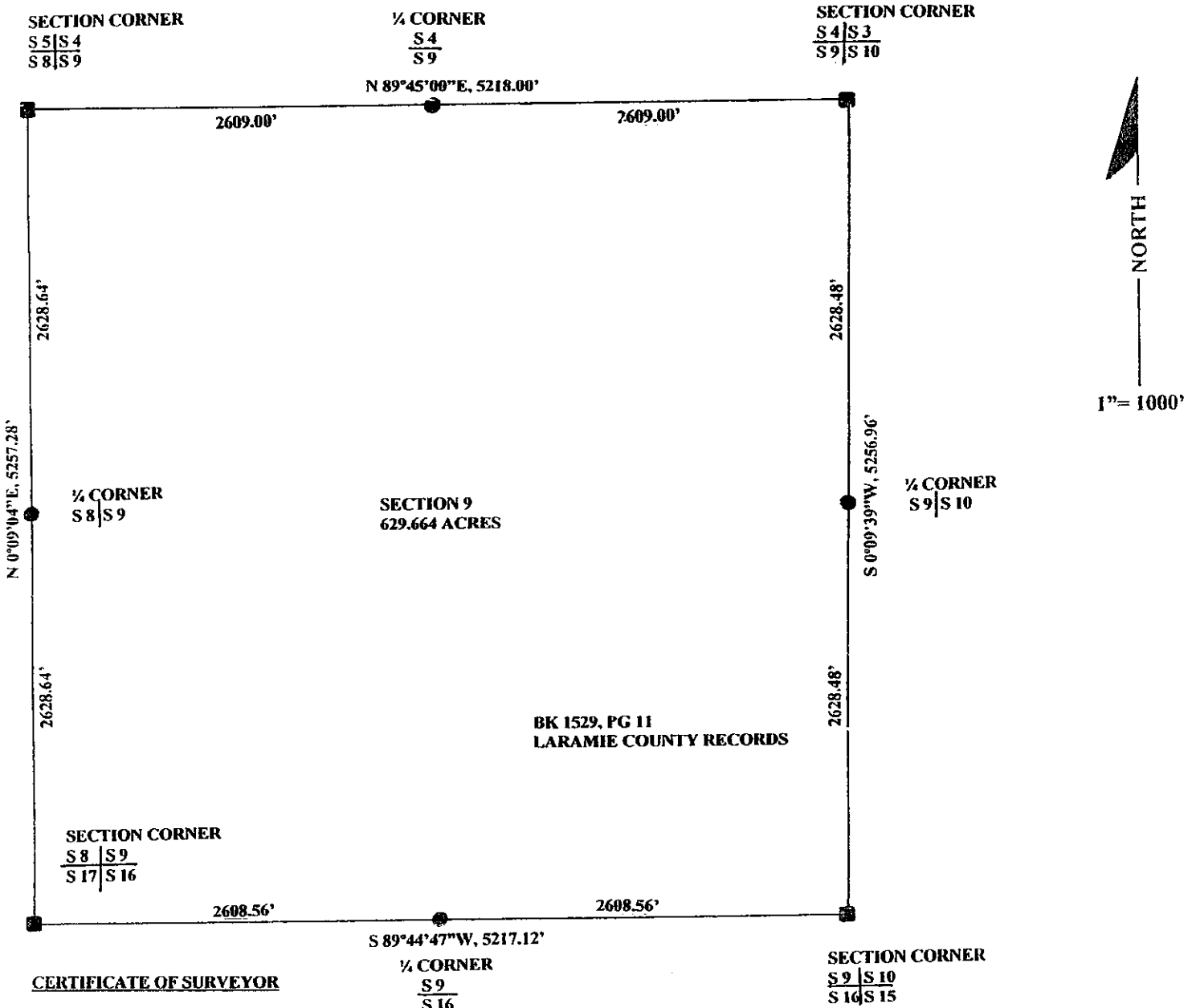
Land Surveyor / Firm / Address
MICHAEL J. GRONSKI
G&S SURVEYS
5211 OGDEN ROAD
CHEYENNE, WYOMING 82009
Telephone: (307) 637-6127

This corner record was prepared by me or under my direction and supervision.
SEAL & SIGNATURE



Corner Name: NORTHEAST CORNER Section: 9 T 12N. R 60W. 6TH P.M. Cross-Index No.: E-13
SBRPEPLS/PLSW: March 1994; PLSW January 1998

RECORDED 1/11/2008 AT 1:14 PM REC# 491256 BK# 2040 PG# 1177
DEBRA K. LATHROP, CLERK OF LARAMIE COUNTY, WY PAGE 1 OF 2

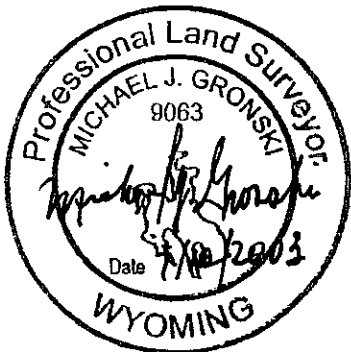


CERTIFICATE OF SURVEYOR

I, MICHAEL J. GRONSKI, A REGISTERED PROFESSIONAL LAND SURVEYOR. DO HEREBY CERTIFY THAT THIS MAP WAS MADE FROM NOTES TAKEN DURING AN ACTUAL SURVEY MADE BY ME IN MAY, 2003, AND THAT THIS MAP, TO THE BEST OF MY KNOWLEDGE AND BELIEF, CORRECTLY AND ACCURATELY REPRESENTS SAID SURVEY.

LEGEND

- FOUND MONUMENTS (REHABILITATED)
- SET CORNER MONUMENTS L.S. 9063



RECORD OF SURVEY
SECTION 9
T.12N., R.60W., 6TH P.M.
LARAMIE COUNTY, WYOMING
JULY, 2003

G&S SURVEYS
5211 OGDEN ROAD
CHEYENNE, WYOMING
(307) 637-6127

Note: This "Record of Survey" to be filed as "Exhibit" upon transfer of property



RECORDED 1/11/2008 AT 1:14 PM REC# 491256 BK# 2040 PG# 1178
DEBRA K. LATHROP, CLERK OF LARAMIE COUNTY, WY PAGE 2 OF 2